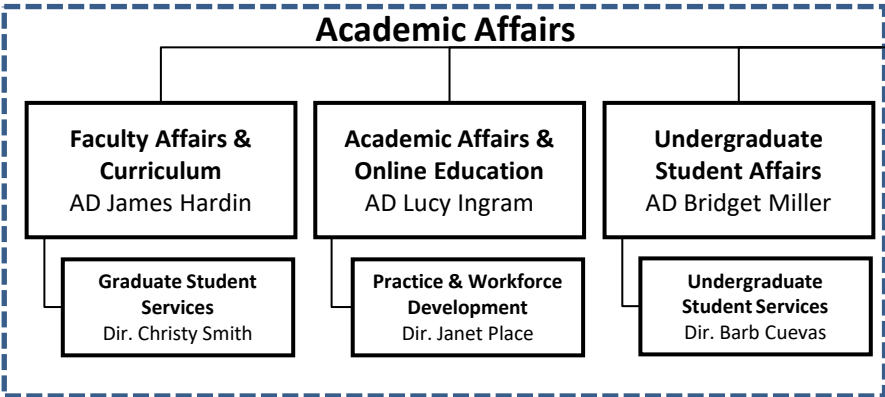


Norman J. Arnold
School of Public Health
Dean Tom Chandler



Diversity, Equity, & Inclusion
AD Toni Torres-McGehee

Research
AD Alan Decho

Operations & Accreditation
AD Lee Pearson

Research Pre- and Post-Award Support Core
Dir. Lumi Bakos

Evaluation & Academic Assessment
Dir. Catherine Nolan

Information Technology
Dir. Tom Johnson

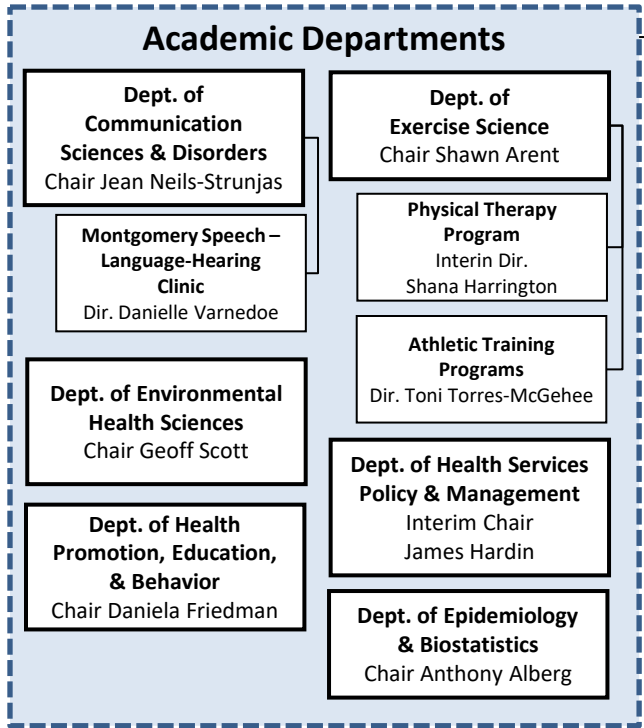
Web Development & Communications
Dir. Matt McGrievy

Core for Applied Research & Evaluation
Dir. Pam Gillam

Center for Community Health Alignment
Exec. Dir. Julie Smithwick

Community Health Worker Institute
Dir. Julie Smithwick

PASOs
Exec. Dir. Maria Martin



Budget Management
Dir. Sandy Besley

Human Resources
Dir. April Davis

Population Health - Greenville Health System
Dir. Caroline Rudisill

Development
(Dir. Vacant)

School Centers

SmartState Center for Effectiveness Research in Orthopaedics
Dir. John Brooks

Oceans & Human Health Center on Climate Change Interactions
Dir. Geoff Scott

SmartState Center for Environmental Nanoscience & Risk
Dir. Jamie Lead

Prevention Research Center
Dir. Sara Wilcox

SmartState Center for Healthcare Quality
Dir. Xiaoming Li

Office for the Study of Aging
Co-Dir. Daniela Friedman & Lee Pearson

SmartState SeniorSMART SMARTBrain Center
Dir. Julius Fridriksson

Center for the Study of Aphasia Recovery
Dir. Julius Fridriksson

SmartState Technology Center to Promote Healthful Lifestyles
Dir. Delia West

Nutrition Consortium
Dir. Christine Blake

Rural Health & Minority Health Research Center
Dir. Jan Eberth

Cancer Prevention and Control Program
Dir. James Hébert

Consortium for Latino Immigration Studies
Dir. Myriam Torres

