

Registering for MATH Courses

Every undergraduate MATH course has a prerequisite that must be satisfied before being allowed to register for the course. Prerequisites are stated in terms of

- i) a suitable score on a Mathematics Placement Test (MAP or MPT),
- or
- i) earning a C or better in another MATH course.

Prerequisite overrides are given when a student can document that the prerequisite will be satisfied before the class starts, for example, when waiting for transfer credits or AP exam scores to be recorded at UofSC. See the MAP website for more information about overrides, including a prerequisite override request form. Note that while this override will allow you to register for a MATH course, you still have to document that you have met all prerequisites before classes begin.

Accessing the MAP Test

Access to the MAP is done through Blackboard and it is restricted to individuals with a valid UofSC network username and password. To find your username, and to reset the password, go to my.sc.edu, then click "Login and Password Help". For additional technical assistance, the Division of Information Technology's (DoIT) Service Desk (sc.edu/about/offices_and_divisions/division_of_information_technology/about_us/contact/) is a single point of contact for computer, technology and IT-related questions and support.

Contact Information

Mathematics Placement Program
Department of Mathematics

Dan Savu, Director
DeeAnn Moss, Undergraduate Program
Administrator

Office: 1523 Greene St.
LeConte College 413
Columbia, SC 29225
Phone: (803) 777-5313
E-mail: assess@math.sc.edu
Website: go.sc.edu/MathPlacement

Special Accommodations

Students needing additional time, or other accommodations, to complete the MAP should contact the the Office of Student Disabilities Resources:

Address: 1705 College Street
Close-Hipp, Suite 102
Columbia, SC 29208
Phone: 803-777-6142
Fax: 803-777-6741
Email: sadrc@mailbox.sc.edu
Website: www.sc.edu/about/offices_and_divisions/student_disability_resource_center/index.php

Technical Support

The Division of Information Technology's (DoIT) information for students can be found at sc.edu/it

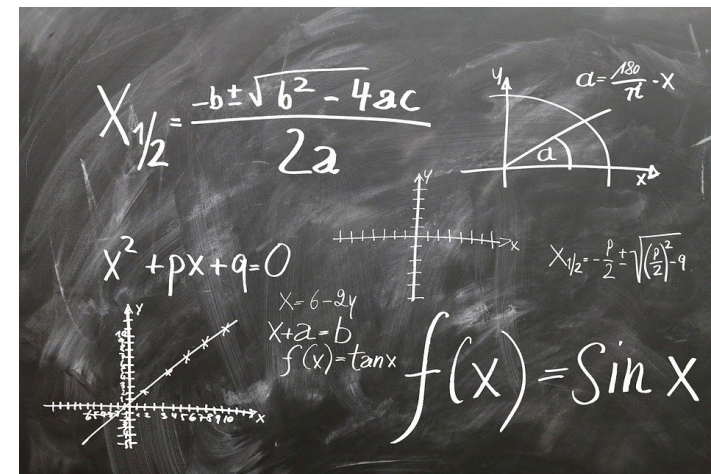


The University of South Carolina does not discriminate in educational or employment opportunities or decisions for qualified persons on the basis of race, color, religion, sex, national origin, age, disability, genetics, sexual orientation or veteran status.

Department of Mathematics
College of Arts and Sciences
University of South Carolina

Mathematics Assessment of Prerequisites

2022 – 2023 Academic Year



Do I need to take the Math Placement Test (MAP)?

Look at the required courses for your degree and your prior MATH courses.

- If your degree requires one or more MATH courses and you **do not** have a C or better in a prerequisite course, **then you must take the MAP.**
- If your degree requires one or more MATH courses and you **do** have a C or better in a prerequisite course, then **you do not need to take the MAP.**
- If you will not be taking any MATH courses at UofSC, then **you probably do not need to take the MAP.** Consult your advisor for a definite answer.
- If you are not sure if you will be taking a MATH course at UofSC, then **you are strongly encouraged to take the MAP.**
- If you need to take a MATH course and there is any question whether your transfer credits will be posted to your UofSC record before your registration date, then **you are strongly encouraged to take the MAP.**

If you still are uncertain, take the MAP.

How do I receive credit for a UofSC MATH course?

There are currently three ways:

1. **Transfer credit from another institution.**
2. **AP/IB/CLEP scores**
3. **Take the course (and pass it!).**

The Registrar's Office maintains detailed information about having prior work appear on your UofSC academic record. See registrar.sc.edu, then click on "Transfer Credits".

When and how do I take the MAP?

The MAP Test is available online in Blackboard, blackboard.sc.edu. You are encouraged to take the MAP at least a week prior to your orientation date. The test has three levels, and you have between 30 to 90 minutes to take the test depending on your ability to pass these levels. Make sure your computer and Internet connection are reliable. If you do get disconnected, simply reconnect and continue your test.

When and how do I find the results of the MAP?

Your score will be reported immediately after completing the MAP. It can take up to two business days before your score is posted to your academic record.

Can I take the MAP if I already have an MPT score?

You can take the MAP test if you have already taken one or both versions of the MPT, which are no longer offered. Please refer to the table to check for the minimum score to qualify for MATH courses at UofSC and fill out the [Retake MAP Registration](#) form.

Can I retake the MAP?

You can retake the MAP once no earlier than 7 days after your first attempt. Before retaking the test, take the practice test and study the topics you missed. Your most recent score on the MAP test is used to determine your eligibility for taking a course. To register for a retake please fill out the [Retake MAP Registration](#) form.

What MATH courses does my MAP or MPT score qualify me to take?

The following table lists the **lowest** MAP (new test), which replaces the two versions of MPT (old test) scores needed to register for the most common MATH courses at UofSC. The maximum MAP score is 310. Note that a C or better in another course can satisfy the prerequisite for some MATH courses. You only need to satisfy the requirement in one of the four columns.

MATH Course	MAP score	MPT Algebra	MPT PreCalc	C or better
111i	0 - 3	4 - 7	-	-
111	4	8	7	-
112	42	14	-	111(i)
115	27	-	7	111(i)
122	42	14	19	111(i)
141 with 151	142	-	19 -22	115
141	217	-	23	115
170	42	14	19	111
174	142	-	19	115, 122, or 141
221	42	14	19	111

Note: MATH 112 is not offered regularly at UofSC-Columbia. MATH 151 is a coreq. course.

What if I want to take a MATH course that is not in this table?

The prerequisites for all other MATH courses do not involve the MAP. See the Undergraduate Bulletin (academicbulletins.sc.edu) for complete prerequisite information for all MATH courses.