

# University of South Carolina: Psychology PhD

## Cognitive and Neural Sciences (CNS) Concentration

[https://sc.edu/study/colleges\\_schools/artsandsciences/psychology/study/graduate/cognitive\\_neural\\_sciences/](https://sc.edu/study/colleges_schools/artsandsciences/psychology/study/graduate/cognitive_neural_sciences/)

In our program, **you will use experimental methods and the latest technology to uncover the cognitive and neural bases of behavior.**

Help advance psychological science by promoting excellence and productivity in research and gain graduate training in behavioral neuroscience, cognitive neuroscience and cognitive psychology to prepare for your future career in research, teaching, and/or industry. All coursework and training emphasizes hands-on training with opportunities for extensive research with next-generation technologies and service to diverse populations.

### Fast facts!

- ❑ CNS program typically takes ~5 years
- ❑ All students are typically supported with a stipend and full tuition for the duration of their studies
- ❑ Health insurance and benefits are provided
- ❑ **Applications are due December 1, 2022**

### Download our full brochure here →

[https://sc.edu/study/colleges\\_schools/artsandsciences/psychology/study/graduate/cognitive\\_neural\\_sciences/cns\\_faculty2.php](https://sc.edu/study/colleges_schools/artsandsciences/psychology/study/graduate/cognitive_neural_sciences/cns_faculty2.php)

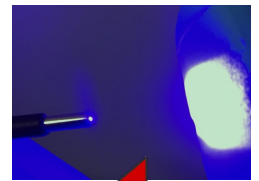


### Topic areas

- Affect / emotion
- Attention
- Behavioral inhibition
- Cognition and cognitive control
- Conceptualization
- Emotion regulation / Regulation
- Decision making / Judgment
- Development and aging
- Language
- Memory
- Microbiome / gut-brain axis
- Multisensory perception
- Pain (neurocognition)
- Psycholinguistics
- Semantic processing
- Sensory-motor integration
- Spatial cognition

### Some techniques we use

- Rodent models of human disease
- Brain stimulation (tDCS, TMS)
- Electroencephalography (EEG)
- Eye tracking (ET)
- Fluorescence microscopy
- Magnetic resonance imaging (MRI)
- Multivariate pattern analysis (MVPA)
- Optogenetics and optical imaging tools



### Some clinical & applied areas we study

Addiction and substance abuse

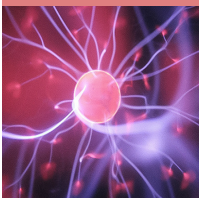
Autism and neurodevelopment

Stress and anxiety

Stroke and aphasia



We hope to hear from you – let us know if you have questions or want to start chatting about science. Best of luck!



# QUESTIONS?

### Cognitive and Neural Science Concentration

Director: Doug Wedell ([wedell@mailbox.sc.edu](mailto:wedell@mailbox.sc.edu))

Admissions committee:

- Caitlin Hudac: [chudac@mailbox.sc.edu](mailto:chudac@mailbox.sc.edu); @greatcait
- Peter Vento: [pvento@mailbox.sc.edu](mailto:pvento@mailbox.sc.edu); @peter\_vento

